

**Evaluation of College by Alumni: Arts (2018-19)**

**Questions:**

How would you agree with the core values that shape vision and mission of your college?

How do you agree that your college should broaden its educational programs?

How would you rate the resources provided by the college to engage with society, industry, and research and outreach programs for students overall development?

How are you satisfied with the facilities provided to the students and staff, such as hostel, lab & office, library and computer facilities?

According to you, how does college have adequate infrastructure to provide excellent learning experience for students?

In what way does the college provide a friendly and encouraging learning environment?

How do you feel that the College is doing enough in its attempts to become a center for creating future ideal citizens, leaders and innovators?

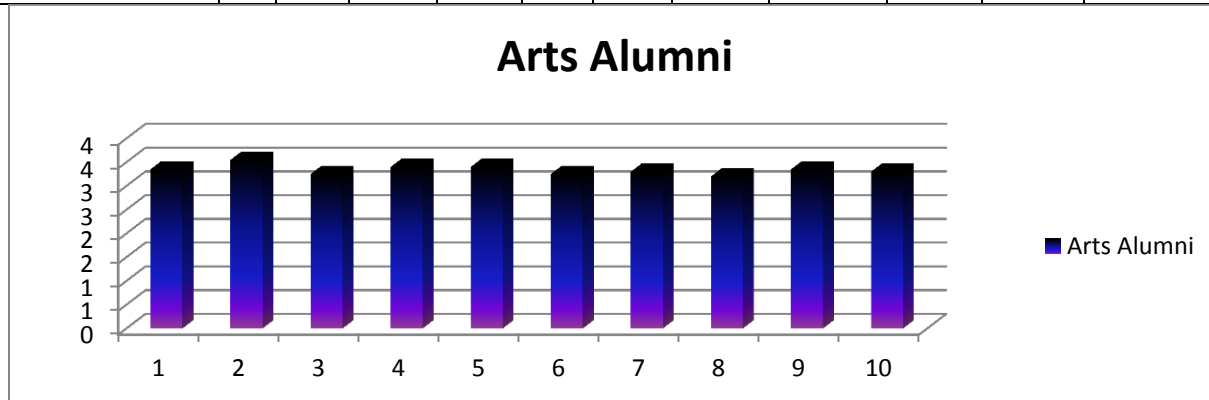
How would you rate the infrastructure for physically handicapped students and employees?

How do you think that the college is taking efforts for students' placement and entrepreneurship?

To what extent do you feel your college should aspire for A grade in NAAC?

**Marks Obtained:**

Class/Que. No.	I	II	III	IV	V	VI	VII	VIII	IX	X	Total Students
Arts Alumni	3	4	3	3	3	3	3	3	3	3	20



**Interpretation:**

Poor: 1      Average: 2      Good: 3      Excellent: 4

**Suggestions: Improved infrastructure and employability of students can be looked at.**

**PRINCIPAL**

Bharatiya Jain Sanghatana's  
Art, Science & Commerce College  
Wagholi, Pune - 412207

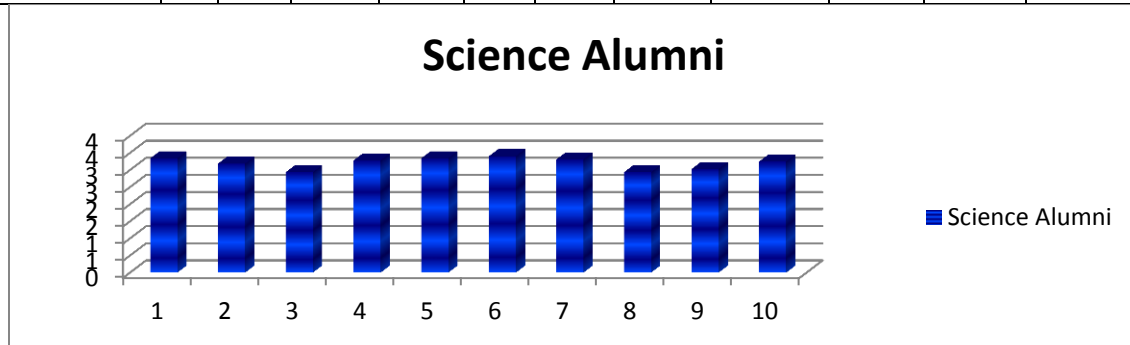
## Evaluation of College by Alumni: Science (2018-19)

### Questions:

1. How would you agree with the core values that shape vision and mission of your college?
2. How do you agree that your college should broaden its educational programs?
3. How would you rate the resources provided by the college to engage with society, industry, and research and outreach programs for students overall development?
4. How are you satisfied with the facilities provided to the students and staff, such as hostel, lab & office, library and computer facilities?
5. According to you, how does college have adequate infrastructure to provide excellent learning experience for students?
6. In what way does the college provide a friendly and encouraging learning environment?
7. How do you feel that the College is doing enough in its attempts to become a center for creating future ideal citizens, leaders and innovators?
8. How would you rate the infrastructure for physically handicapped students and employees?
9. How do you think that the college is taking efforts for students' placement and entrepreneurship?
10. To what extent do you feel your college should aspire for A grade in NAAC?

### Marks Obtained:

Class/Que. No.	I	II	III	IV	V	VI	VII	VIII	IX	X	Total Students
Science Alumni	3	3	3	3	3	3	3	3	3	3	32



### Interpretation:

Poor: 1      Average: 2      Good: 3      Excellent: 4

**Suggestions: Must continue our efforts to connect with Alumni.**

  
**PRINCIPAL**  
 Bharatiya Jain Sanghatana's  
 Art, Science & Commerce College  
 Wagholi, Pune - 412207

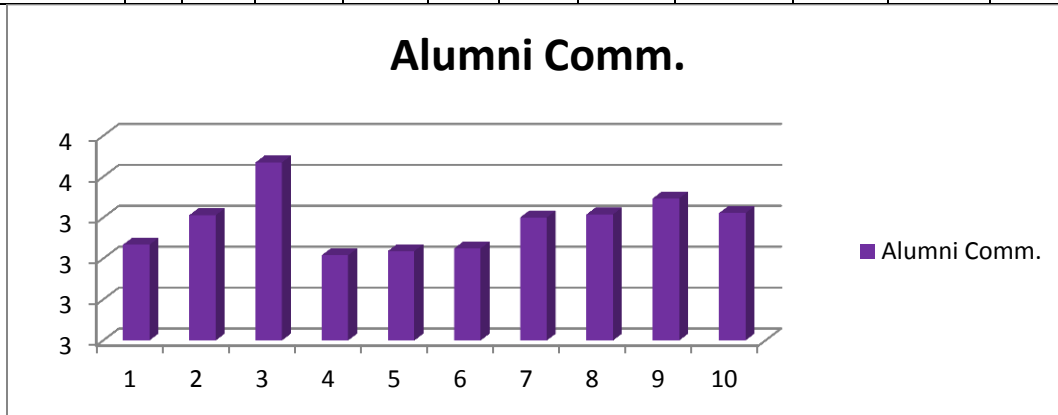
**Evaluation of College by Alumni: Commerce (2018-19)**

**Questions:**

1. How would you agree with the core values that shape vision and mission of your college?
2. How do you agree that your college should broaden its educational programs?
3. How would you rate the resources provided by the college to engage with society, industry, and research and outreach programs for students overall development?
4. How are you satisfied with the facilities provided to the students and staff, such as hostel, lab & office, library and computer facilities?
5. According to you, how does college have adequate infrastructure to provide excellent learning experience for students?
6. In what way does the college provide a friendly and encouraging learning environment?
7. How do you feel that the College is doing enough in its attempts to become a center for creating future ideal citizens, leaders and innovators?
8. How would you rate the infrastructure for physically handicapped students and employees?
9. How do you think that the college is taking efforts for students' placement and entrepreneurship?
10. To what extent do you feel your college should aspire for A grade in NAAC?

**Marks Obtained:**

Class/Que. No.	I	II	III	IV	V	VI	VII	VIII	IX	X	Total Students
Commerce Alumni	3	3	4	3	3	3	3	3	3	3	97



**Interpretation:**

Poor: 1      Average: 2      Good: 3      Excellent: 4

**Suggestions:** Suggestions can be taken from Alumni for development and better social connectivity.

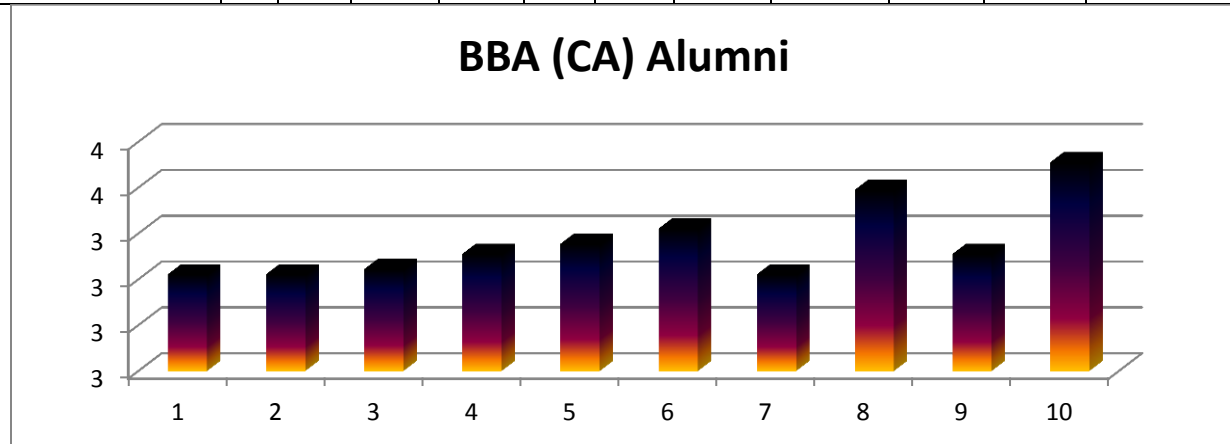
**Evaluation of College by Alumni: BBA (CA) (2018-19)**

**Questions:**

1. How would you agree with the core values that shape vision and mission of your college?
2. How do you agree that your college should broaden its educational programs?
3. How would you rate the resources provided by the college to engage with society, industry, and research and outreach programs for students overall development?
4. How are you satisfied with the facilities provided to the students and staff, such as hostel, lab & office, library and computer facilities?
5. According to you, how does college have adequate infrastructure to provide excellent learning experience for students?
6. In what way does the college provide a friendly and encouraging learning environment?
7. How do you feel that the College is doing enough in its attempts to become a center for creating future ideal citizens, leaders and innovators?
8. How would you rate the infrastructure for physically handicapped students and employees?
9. How do you think that the college is taking efforts for students' placement and entrepreneurship?
10. To what extent do you feel your college should aspire for A grade in NAAC?

**Marks Obtained:**

Class/Que. No.	I	II	III	IV	V	VI	VII	VIII	IX	X	Total Students
<b>BBA (CA). Alumni</b>	<b>3</b>	<b>3</b>	<b>3</b>	<b>3</b>	<b>3</b>	<b>3</b>	<b>3</b>	<b>4</b>	<b>3</b>	<b>4</b>	<b>45</b>



**Interpretation:**

Poor: 1      Average: 2      Good: 3      Excellent: 4

**Suggestions: Keep it up.**

**PRINCIPAL**  
Bharatiya Jain Sanghatana's  
Art, Science & Commerce College  
Wagholi, Pune - 412207

